

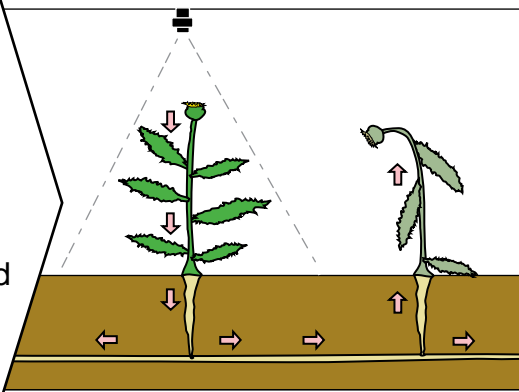
Penn State Pointers ► Using Liquid Herbicides

Graphics / Illustration: Tom Laird, College of Agricultural Sciences. Copyright Penn State.

Careful application of liquid herbicides may be needed to treat small areas of dense, broadleaf weed growth.

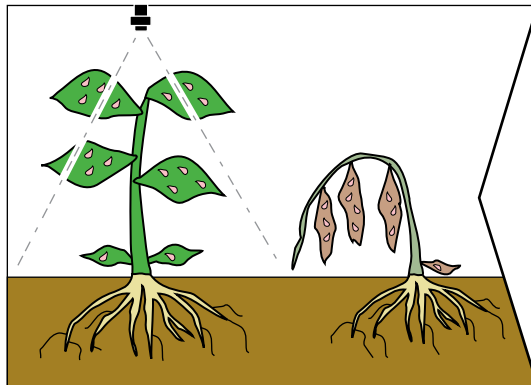
Systemic Herbicides...

Used on vining or creeping weeds. Kills by being absorbed by the weed and spread through its root system.



Contact Herbicides...

Often applied to individual weeds. Kills the weed by absorption into weed surfaces.



After treating small areas, remove dead weeds and apply fertilizer to help the lawn fill in. Seed the area if needed.

Visit us at

["http://aginfo.psu.edu/psp/index.html"](http://aginfo.psu.edu/psp/index.html)

For Spring/Summer/Fall Time Frame