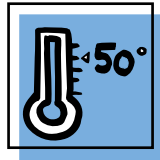


Follow these simple rules for holiday flowers...



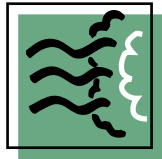
**Place plants in bright light,
but not direct sunlight.**

Full sun tends to fade blooms.



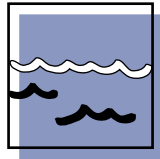
**Keep them cool, but not
below 50°F.**

Never subject plants to freezing.



Keep plants out of drafts.

Adverse conditions can damage blooms.



**Make certain soil is moist,
but not soggy.**

Too dry or too wet damages roots.



**Once plants flower, they need
lots of light to maintain quality.**

Remove flowers when they fade.

Graphics / Illustration: Tom Laird, College of Agricultural Sciences. Copyright Penn State.

Visit us at

["http://aginfo.psu.edu/news/psp/index.html"](http://aginfo.psu.edu/news/psp/index.html)

For Possible Fall/November Timeframe